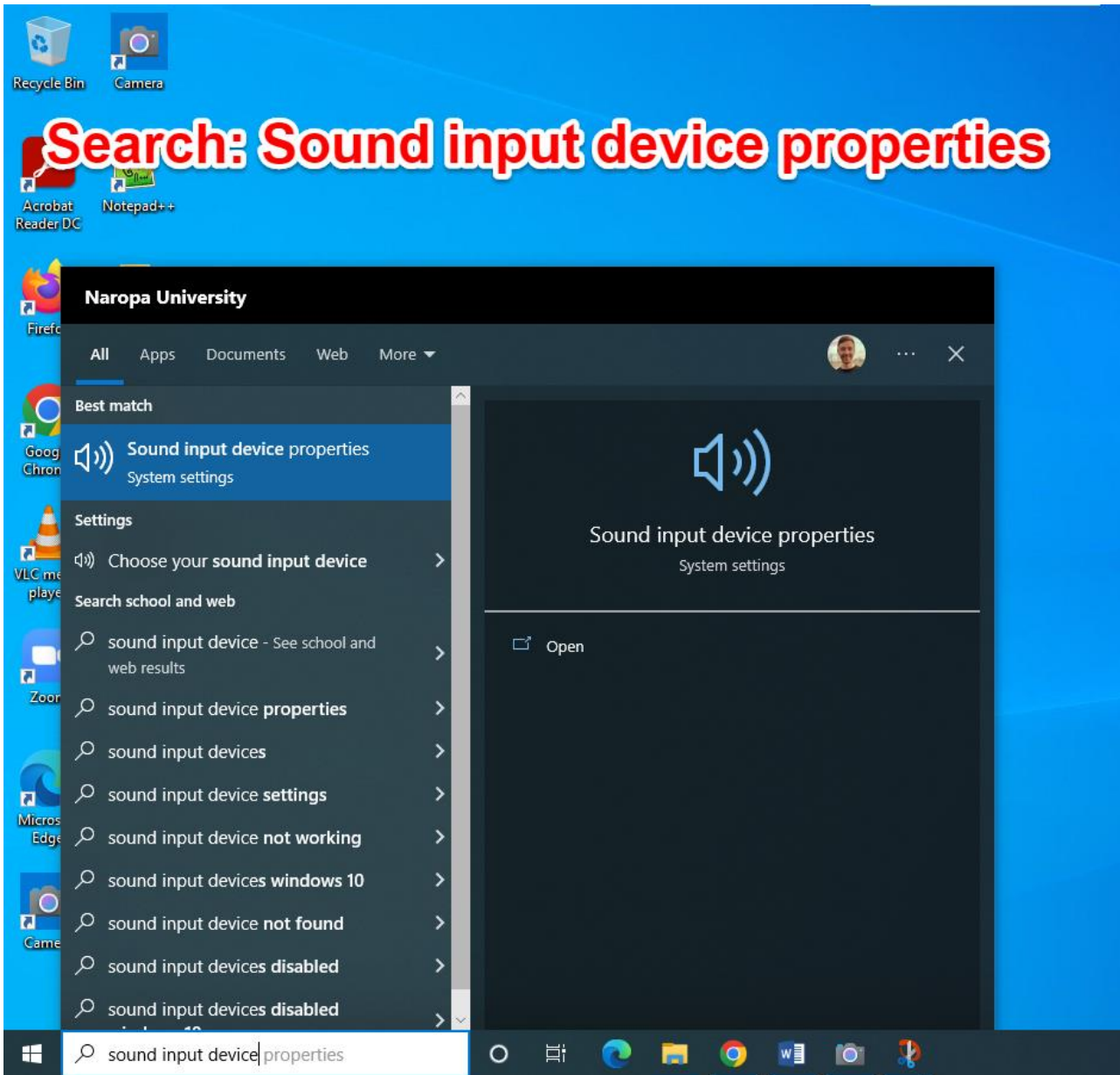
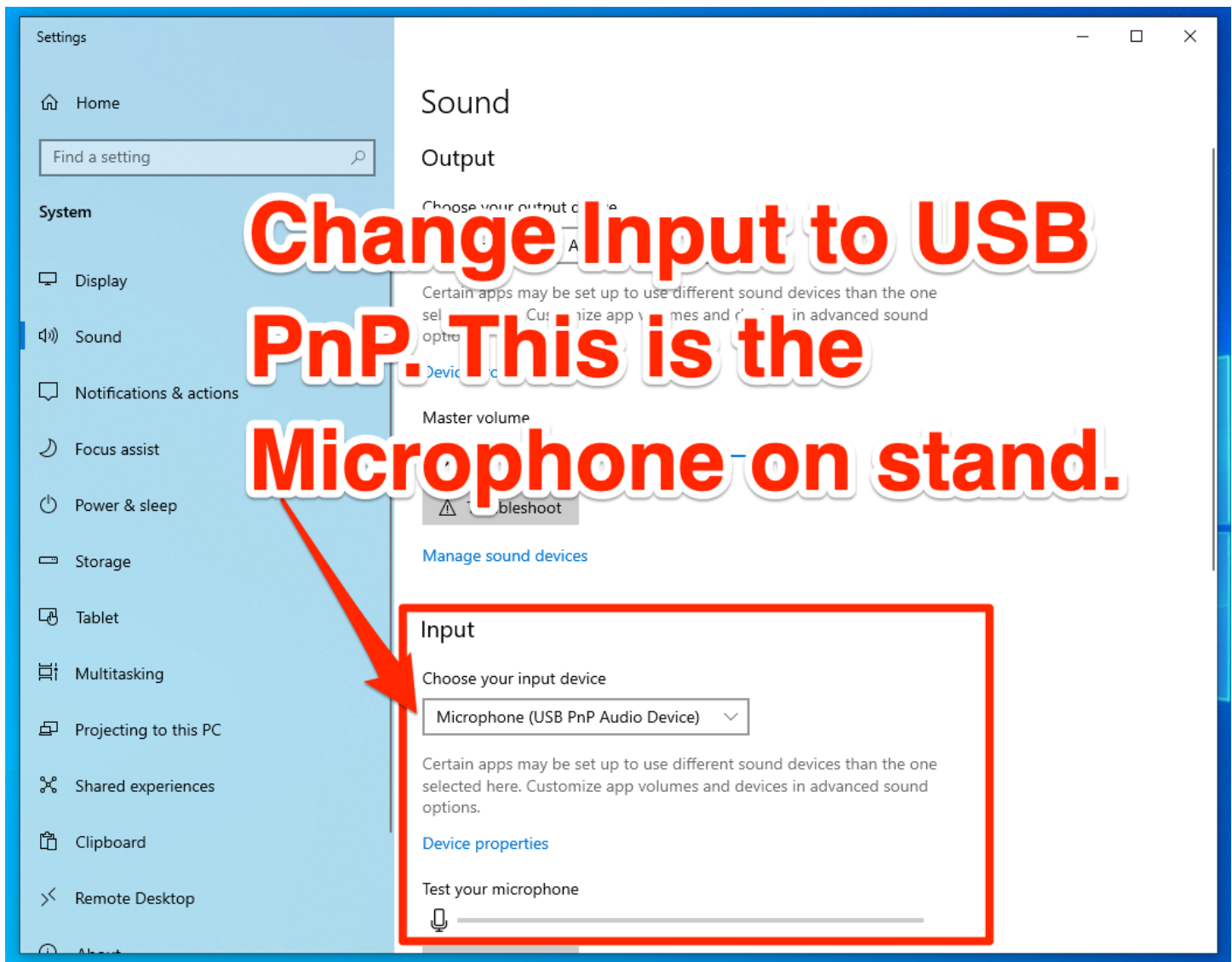


Video Lab Recording Instructions 2022

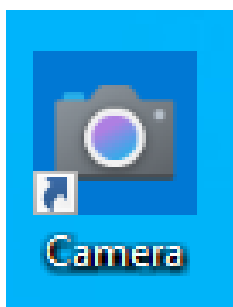
Setup

1. Change the Input Device to the PnP Microphone. Follow images below.

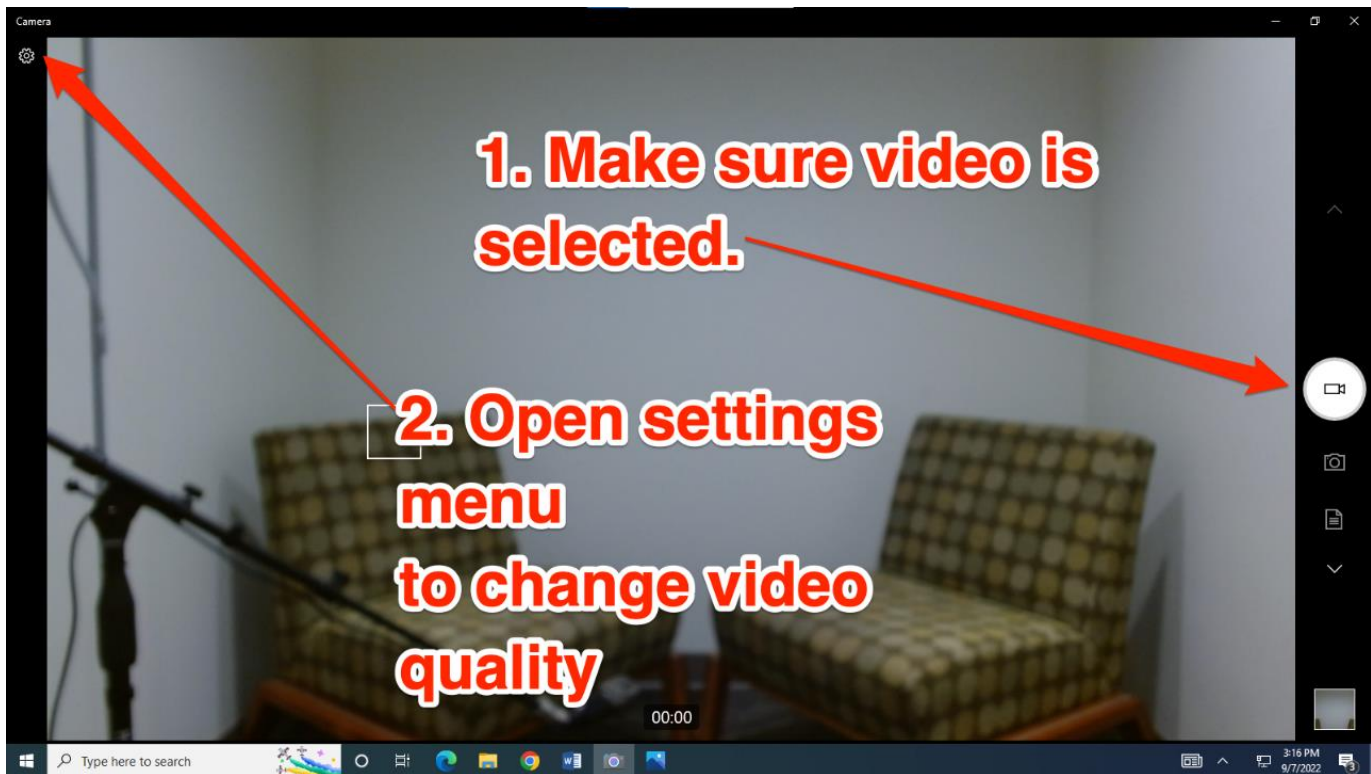




Open the CAMERA App from DESKTOP



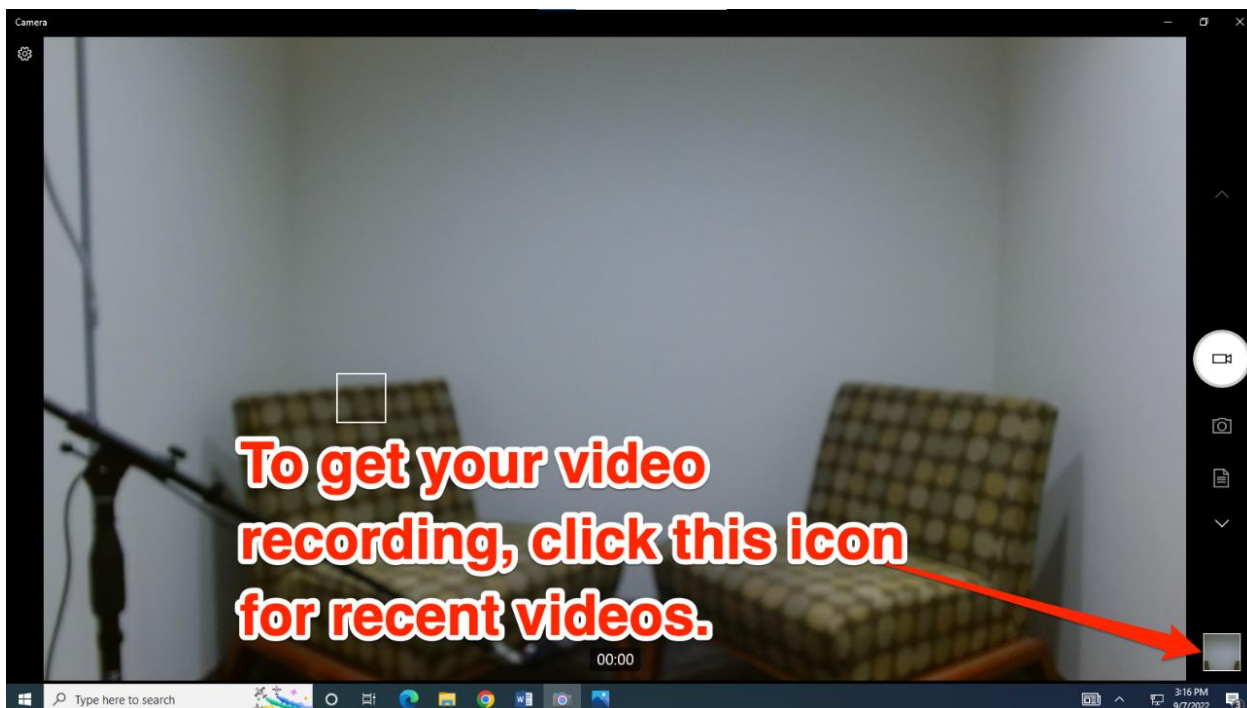
VIDEO QUALITY SETTINGS



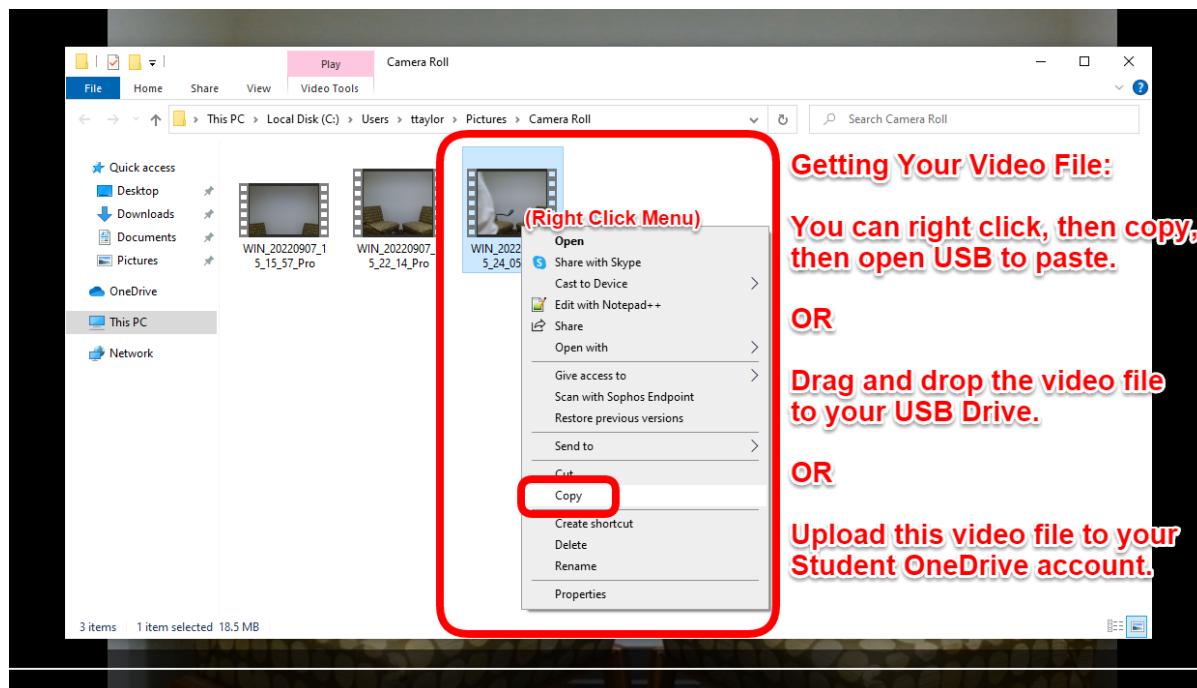
RECORDING



EXPORTING



EXPORTING



Click the bottom right square button with a preview of your video.

To copy the video to your USB Drive, click the three dots in top right corner and choose Open Folder. Then copy that file into your USB or upload to OneDrive.

Your sessions will be saved locally on the computer until the computer fills up and IT deletes them all.

If you would like to delete the file immediately, please verify you have it copied properly, then go to Camera Roll, and delete the video.